

## **Wilderness Traverse Adventure Race - July 2014**

### **Competitor Instructions**

#### **Emergency Phone Numbers:**

Head of Safety: Graham Rupert

Event Director: Bob Miller

Headquarters: Barb Campbell

Emergency Services: 911

#### **Contents of Race Package:**

- These Competitor Instructions (3 pages)
- 3 National Topographic System (NTS) Topographic Maps
- 1 Backroads Map Book map
- 1 Nautical Chart of Bayfield Inlet

#### **Details for National Topographic System Maps**

- Information Current as of 1988 (some trails and roads (in bold) as of 2014)
- Scale: 1:50000
- 1000m UTM Grid Zone 17T (Map 1 & 2: NAD 27, Map 3: NAD 27 & NAD 83)
- Contour Interval: 20m and/or 50ft (Map 1 & 2: 50ft, Map 3: 20m and 50ft)
- Magnetic Declination: 10.5° West (current as of 2014)

#### **Definitions:**

CP – Checkpoint (Must punch SI card at all CPs)

TA – Transition Area (All TAs are also CPs. You will have access to gear bins here)

#### **Course Specific Rules:**

1. Any team arriving at a CP past an "**Absolute Cut-Off**" must notify Race Management of their location and condition prior to that cut-off.
2. All teams must be off the course by 2:00pm on Sunday July 13, 2014.
3. **Out-of-Bounds** roads are labeled on maps. **Hwy's 400 and 69 are Out-of-Bounds**, although it is okay to cross Hwy 400 on the overpass at Avro Arrow Road to reach the Finish.
4. Crossing Private Property is forbidden. Be courteous and respectful when passing, or approaching any private residences (especially in the dark).
5. Traveling along railway tracks is forbidden (it is okay to cross them).

### **START**

#### **Map 1**

The Start is located at Bayfield Inlet. The race begins on the water at 8:00am on Saturday July 12<sup>th</sup>, 2014. Teams will be bused to the start from the McDougall Recreation Centre. Buses will depart at 7:00am sharp and the bus ride is expected to take 45 minutes. Teams will have a few minutes to select a canoe and get on the water for the start, which will take place in front of the government dock.

### **Section 1 – Canoeing**

#### **CP1**

#### **Map 1**

CP1 is located on an island in a bay on a point.

#### **CP2**

#### **Map 1**

CP2 is located where the Naiscoot River passes under Hwy 529 (northeast side of bridge).

## ***Wilderness Traverse Adventure Race - July 2014***

### **CP3/TA1                      Map 2                      (Gear Bin #1 available)**

CP3/TA1 is located at a clearing on a logging road. Teams must portage their canoes to TA1 and place them where directed by event staff. Teams are permitted to leave paddles, PFD's and canoe seats outside of their gear bin at TA1 and they will be transported back to the finish line by event staff. Teams should attach this paddling equipment together, or bring a bag to pack it in for transport. Any gear not packed back in Bin #1 will not be available to you later in the race.

### **Section 2 – Trekking** (acceptable means of travel: on foot & packraft)

#### **CP4                                      Map 2**

CP4 is located at a campsite on the north shore of Trout Lake.

#### **CP5                                      Map 2**

CP5 is located at a campsite on the north shore of Gull Lake where a stream enters the lake.

#### **CP6/TA2                      Map 2                      (Gear Bin #2 available)**

CP6/TA2 is located at Rainbow Airways. If arriving at TA2 after dark be courteous of the owner and keep noise to a minimum.

**Short-Course #1 Cut-Off at CP6/TA2:** Teams must leave CP6/TA2 by 0800 on Sunday July 13, 2014 to remain on the Full Course. Teams departing after 0800 can continue on Short Course #1 and bike directly to the finish. Short course teams are permitted to travel on The Bunny Trail Road and Hwy 124 wherever they choose.

**Absolute Cut-Off at CP6/TA2:** Teams arriving at CP6/TA2 past 1130 on Sunday July 13, 2014 will be removed from the course and transported to Race Headquarters by event staff.

### **Section 3 – Mountain Biking**

#### **CP7                                      Map 2**

CP7 is located at a campsite on the eastern shore of Black Lake. Travel on the Bunny Trail Road south of CP6/TA2 while biking is not permissible. It is recommended to take roads to reach CP7. The trail labeled "104" on the BackRoads Map Book Map is very wet and marshy west of Bunny Trail Road.

#### **CP8                                      Map 3**

CP8 is located at a parking area on the west side of railroad tracks.

**Short-Course #2 Cut-Off at CP8:** Teams must leave CP8 by 0730 on Sunday July 13, 2014 to remain on the Full Course. Teams departing after 0730 can continue on Short Course #2 and bike directly to the finish.

## ***Wilderness Traverse Adventure Race - July 2014***

**Absolute Cut-Off at CP8:** Teams arriving at CP8 past 1300 on Sunday July 13, 2014 will be removed from the course and transported to Race Headquarters by event staff.

### **CP9/TA3                      Map 3                      (Gear Bin #1 available)**

CP9/TA3 is located in a quarry north of McDougall Road. Teams are not permitted to travel on Hwy 124 south of CP8.

**Short-Course #3 Cut-Off at CP9/TA3:** Teams must leave CP9/TA3 by 0900 on Sunday July 13, 2014 to remain on the Full Course. Teams departing after 0900 can continue on Short Course #3 and bike directly to the finish.

### **Section 4 – Trekking** (acceptable means of travel: on foot and packraft)

#### **CP10                              Map 3**

CP10 is located at a campsite on a point.

#### **CP11 (unmanned) Map 3**

CP11 is located where a stream leaves a small lake.

#### **CP12/TA4                      Map 3                      (Gear Bin #1 available)**

CP12/TA4 is located at a parking area on the west side of railroad tracks. It is the same location as CP8.

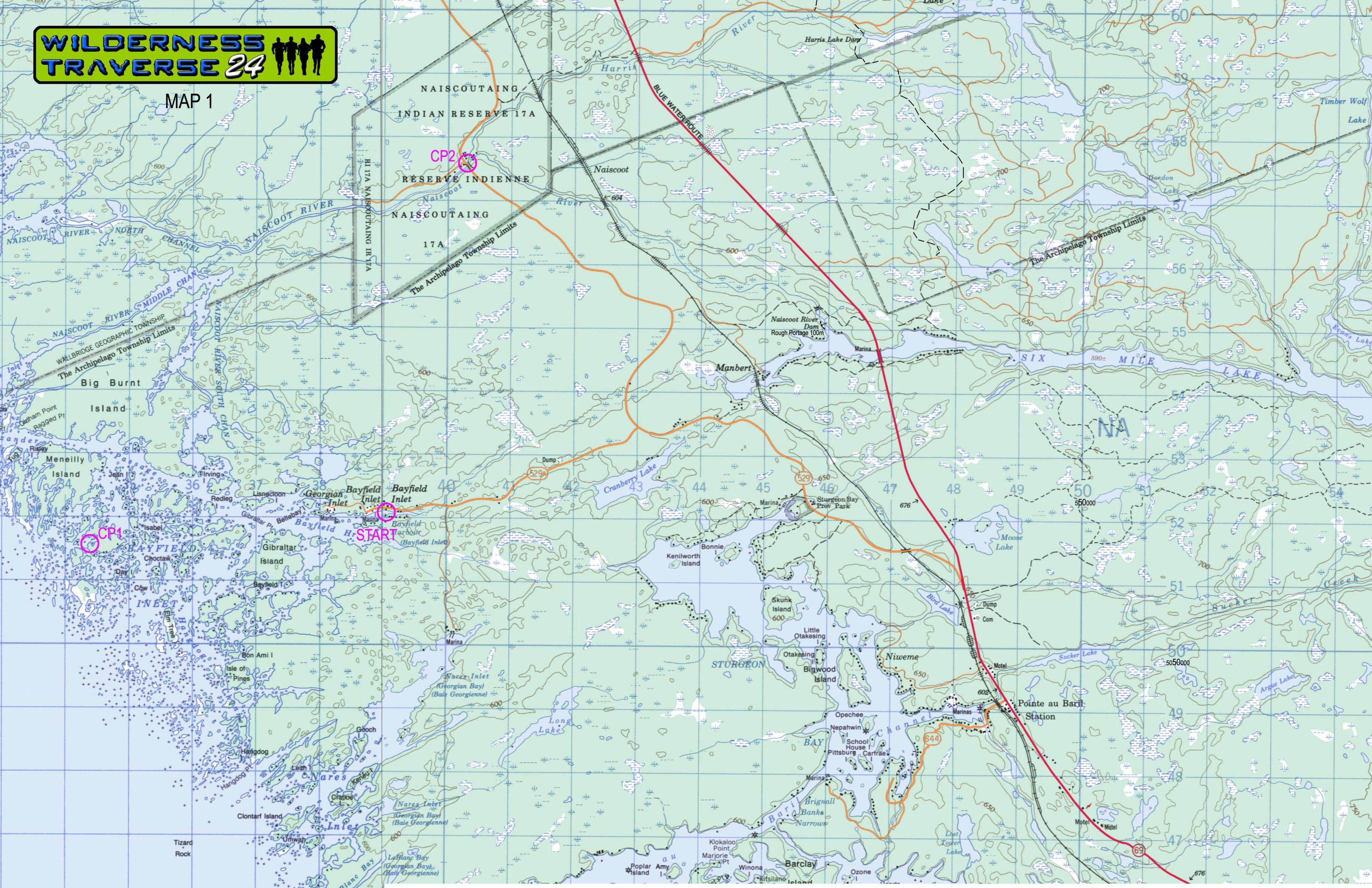
#### **FINISH                              Map 3**

The Finish will be at the McDougall Recreation Centre. Teams must travel on mapped roads once west of Hwy 400. No cutting through backyards, or other private property.



# WILDERNESS TRAVERSE 24

MAP 1

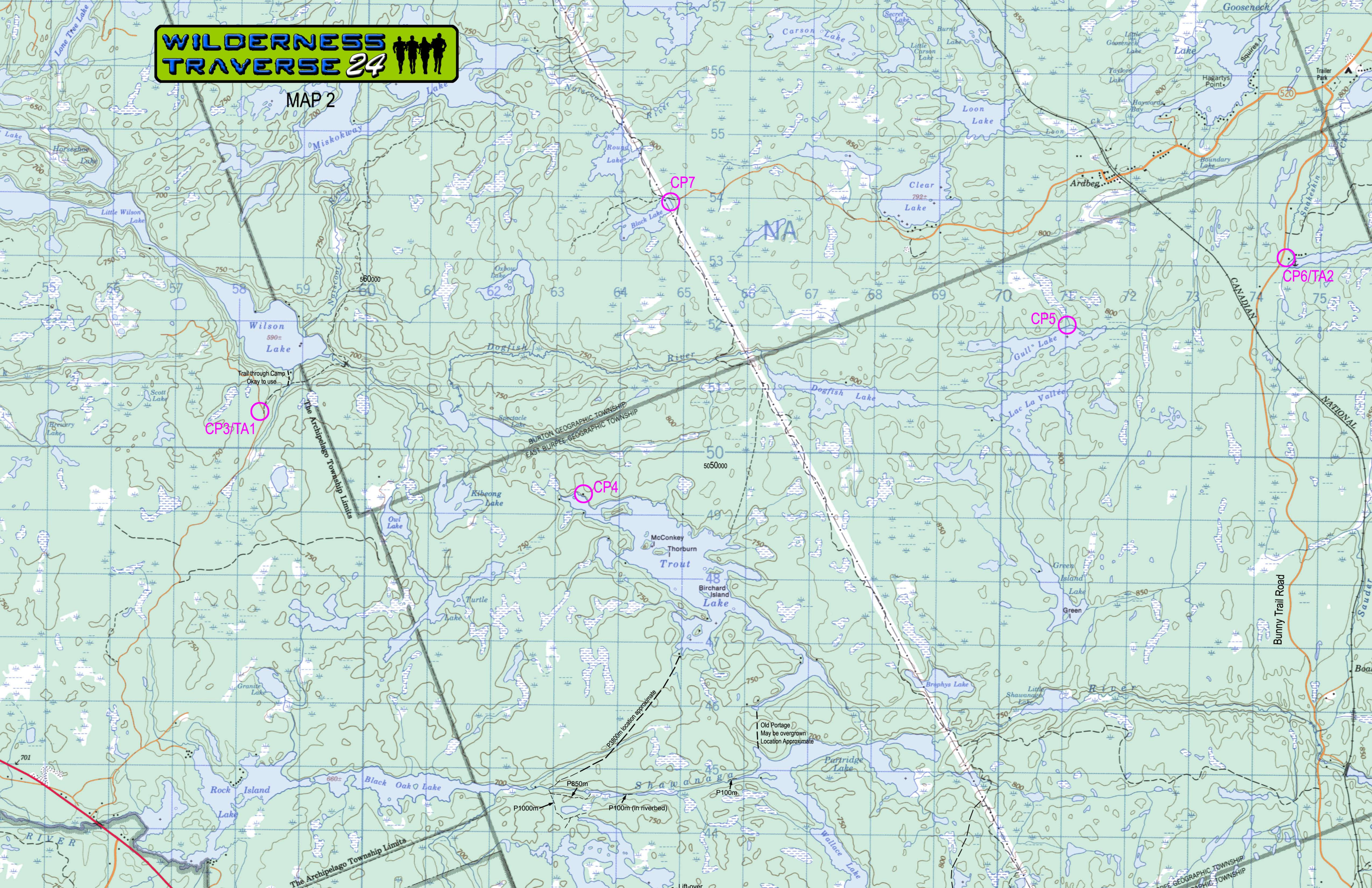




# WILDERNESS TRAVERSE 24



MAP 2





# WILDERNESS TRAVERSE 24



MAP 3

